

C32/16-line Mechanical LiDAR



C32

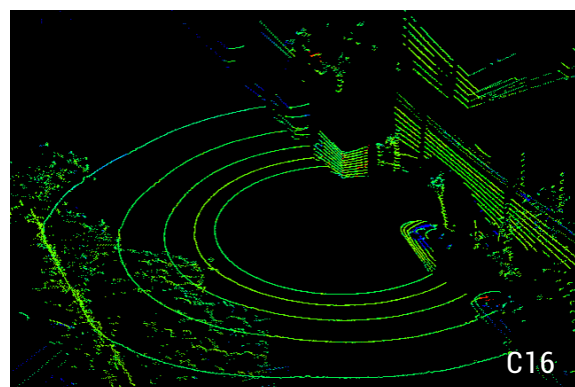
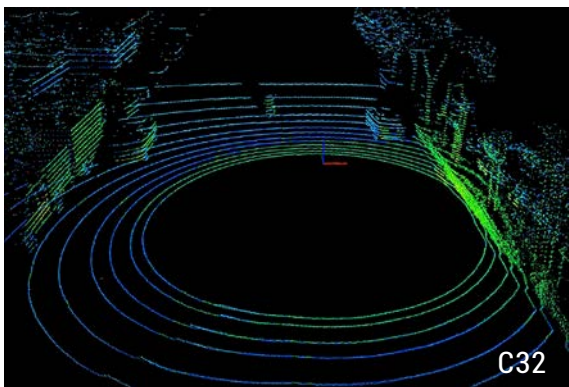
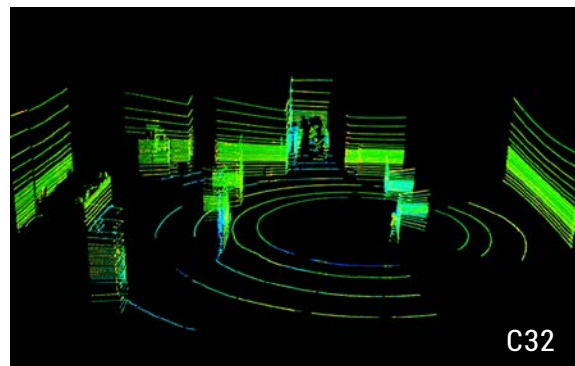
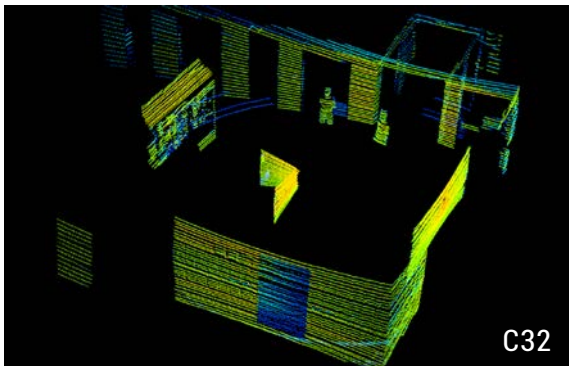


C16

Abstract

C32/16 achieves 360° 3D high-speed scanning with stable and reliable performance. Being benefited from self-developed LD and APD automated packaging process, the laser transmitter and receiver modules of C32/16 are highly integrated, with more stable and reliable performance, more shock and vibration resistance, and more suitable for mass production. Both are widely used in autonomous vehicle, ADAS, smart transportation, robots, logistics, surveying and mapping, security and so on.

Demo



Parameters

Model		C32	C16
Channel		32	16
Measurement Technique		TOF	
Wavelength		905nm	
Laser Classification		Class 1 (Eye-safe)	
Range		150m	
Accuracy		±3cm	
Data Points Generated	Single Return	600,000 pts/s	320,000 pts/s
	Dual Returns	1,200,000 pts/s	640,000 pts/s
Rotation Rate		5Hz, 10Hz, 20Hz (optional)	
FOV	Horizontal	360°	
	Vertical	-16°~ 15°	-15°~ 15°
Resolution	Horizontal	5Hz: 0.09° / 10Hz: 0.18° / 20Hz: 0.36°	
	Vertical	1°	2°
Operating Voltage		9V~ 36V DC	
Operating Temperature		-20°C ~60°C (Customized up to -40°C)	
Communication Interface		Ethernet, PPS, GPS	
Shock Test		500m/sec ² , last11ms	
Vibration		5Hz-2000Hz, 3G rms	
IP		IP67	
Weight		1600g	1000g
Dimension (D·H)		Φ120*110mm	Φ 102 * 81 mm